



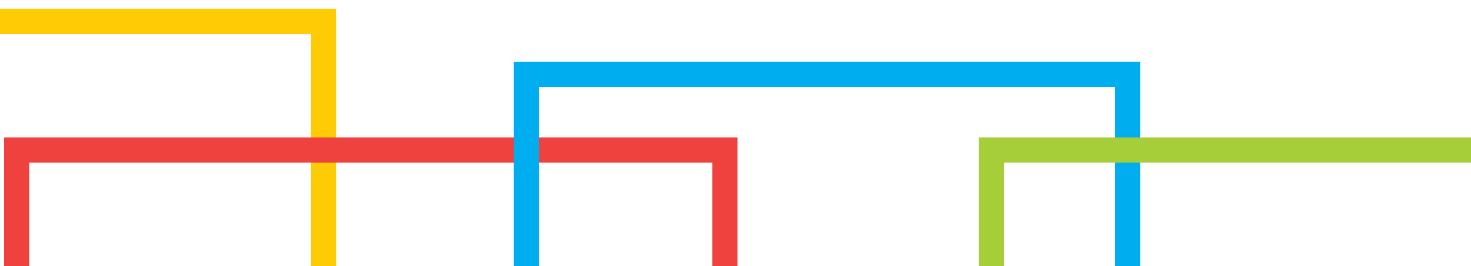
DYNACO S-559 Cat.2 Atex All Weather

www.dynacodoor.com

Push-Pull
gear driven technology



outside door



DYNACO S-559 Cat.2 Atex All Weather

The Dynaco S-559 Cat.2 Atex All Weather is specifically designed for outside applications in explosion sensitive environments of category 2 and harsh conditions.

Officially approved by Apragaz notified body for use in potentially explosive atmospheres.

All metal parts are stainless steel, non-metallic parts are composed of antistatic or electrical conductive materials, thus avoiding the build up of static electricity that could generate sparks.

Operating speed and perfect sealing properties improve your traffic flows and provide employee comfort, environmental control and savings on energy costs. Fully self-reinserting, the Dynaco S-559 Cat.2 Atex All Weather will automatically reinsert itself in its side guides when the curtain is accidentally hit.

- **HIGH SPEED OPERATION:**
Maximum speed 1 m/s.
- **PATENTED "PUSH PULL" TECHNOLOGY:**
Unique door drive system.
- **SUPERIOR SEAL, WIND RESISTANT:**
Patented side frame assembly.
Up to wind load class 5.
- **CRASH FORGIVING AND SELF-REINSERTING WITHOUT INTERVENTION:**
The curtain automatically reinserts itself when dislodged. No repair costs, no production downtime.
- **USER SAFETY:**
Flexible curtain without rigid elements.
- **ADVANCED DRIVE:**
Frequency driven motor and encoder for smooth operation. Wearable elements are reduced to a minimum.
- **DYNALOGIC CONTROL BOX:**
User-friendly control box with self-diagnosis.
- **CONFORM TO EN13241-1**
- **CONFORM TO DIRECTIVE 2014/34/EU**
Ex II 2 G/D
Ex h T4 135°C
Ex db ia e IIC T4 EPL Gb
Ex tb ia IIIB 135°C EPL Db
CE 0029 APRAGAZ 17 ATEX 0157 X
T ambient -10°C to 55°C



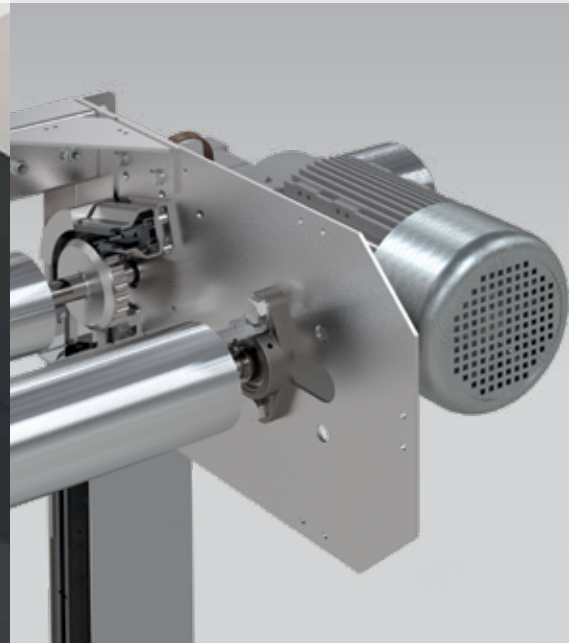
All synthetic parts
in antistatic material



Side reinforcement



Complete structure
in stainless steel





EN13241-1 STANDARDS

| Standard | Ref. | Test acc. | Results |
|-----------------------|----------|-----------|-------------------------|
| Water permeability | EN 12425 | EN 12489 | Class 3 |
| Wind load | EN 12424 | EN 12444 | Class 4* |
| Windpermeability | EN 12426 | EN 12427 | Class 1** |
| Safe openings | EN 12453 | EN 12445 | Pass |
| Mechanical resistance | EN 12604 | EN 12605 | Pass |
| Unintended movements | EN 12604 | EN 12605 | Pass |
| Thermal transmittance | EN 12428 | EN 12428 | 6,02 W/m ² K |
| Performance (cycles) | EN 12604 | EN 12605 | NPD |


The indicated class for wind resistance applies for maximum dimensions.

* For doors up to W 5.000mm x H 5.500mm: Class 5

** Valid for a door of 3500 x 3500mm

| Explosion groups | Temperature class | | | | | |
|-------------------------------------------------------|----------------------------------------------------------------------------------------------------------------------------------|-------------------------------------------------------|------------------------------------------------------|----------------|--------|---------------------------|
| | T1 | T2 | T3 | T4 | T5 | T6 |
| Min. ignition temperature or max. surface temperature | 450 °C | 300 °C | 200 °C | 135 °C | 100 °C | 85 °C |
| I (Mining) | Methane | | | | | |
| IIA | Acetone Ammonia Benzene Acetic acid Ethane Ethyl acet. Methane Methanol Naphthalene Phenol Propane | i-Amylac- etate n-Butane n-Butane alcohol | Benzines Diesel fuels Fuel oils n-Hexane | Acetalaldehyde | | |
| IIB | Town gas | Ethylene Ethylene oxide | Hydrogen sulphide | Ethyl ether | | |
| IIC | Hydrogen | | | | | Carbon disul- phide |

CHARACTERISTICS

| | |
|---------------------------------------|----------------------------------------------------------------------------------------------------------------------------------------------------------------------------------------------------------------------------------------------------------------------|
| Max. dimensions | W 5.500 mm x H 5.500 mm |
| Opening speed Closing speed | Maximum 1 m/s 1 m/s |
| Structure | Stainless steel: 80 x 40 x 3 mm. |
| Drum | Stainless steel - Ø 102 x 1.2 mm. |
| Side guides | Reinforced antistatic polyethylene (PE-UHMW1000 carbon black) on springs. Side guides reinforced over the total height. |
| Motor | 4 poles, without brake. Ex d Power 1,5 kW - IP rating: IP 66 |
| Control box | DYNALOGIC 5 (500x500x250mm) provided with: circuit breaker, general divider, adjustable timer, push button for opening and reset, emergency stop and Ex i switching amplifier. IP rating: IP 65. Frequency inverter. Always to be installed outside the danger zone. |
| Standard detectors | Ex ia infrared barrier: 300 mm from the floor. Bottom edge detection via intrinsic safety barrier |
| Power supply Frequency | Single phase 230V - 16 A Frequency: 50-60 Hz |
| Available colours comparable with: | Black RAL9005  (Actual colour may deviate. Colour sample available upon request) |

Atex motor, gearbox and encoder



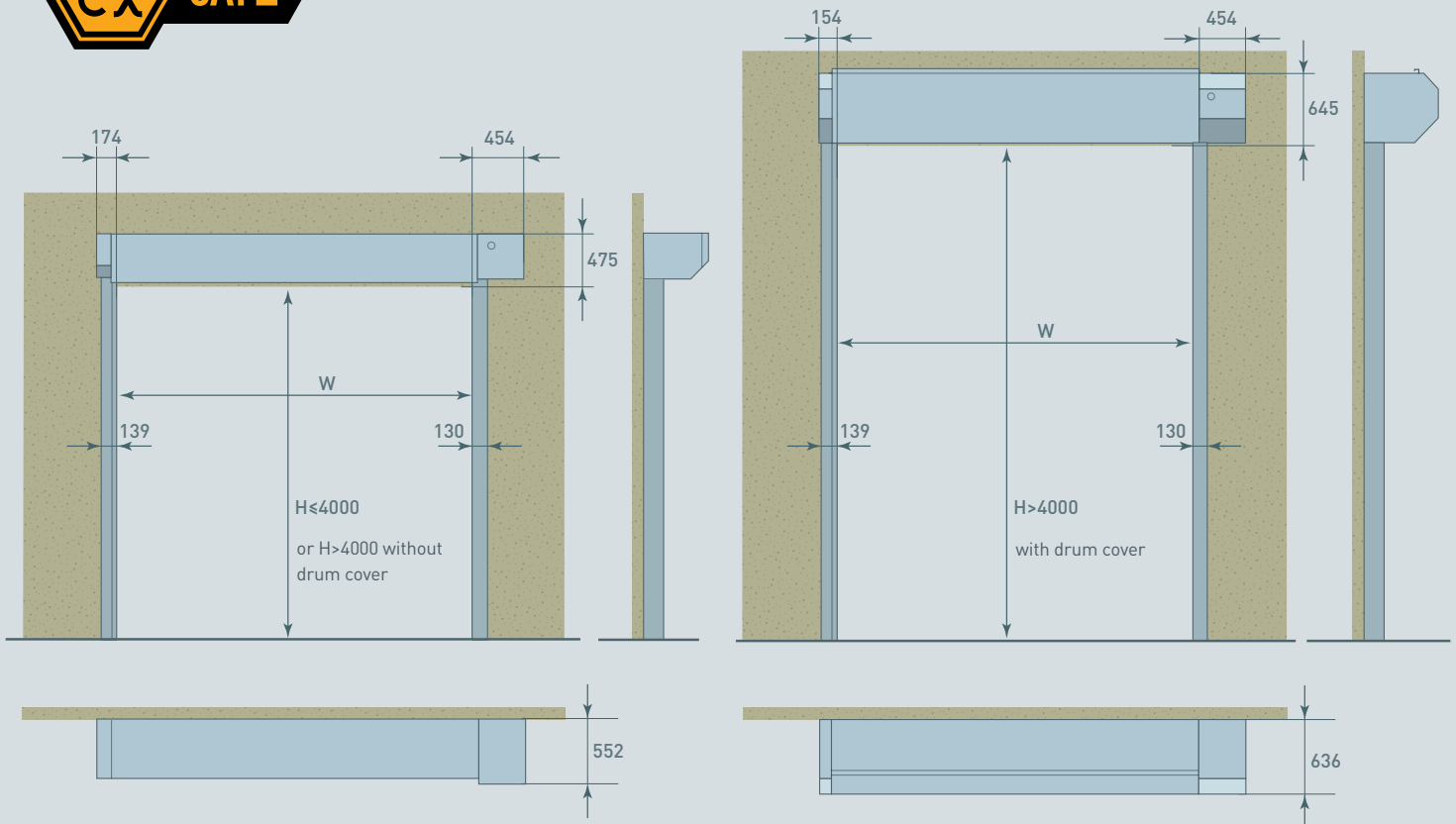
Bottom edge detection via intrinsic safety barrier



Standard earthing kit



Dimensions and installation requirements DYNACO S-559 Cat.2 Atex



All indicated dimensions are net: the space necessary for mounting and maintenance has to be provided. Reduced dimensions: upon request.

REMARK: Based on the risk analysis of the environment, extra push buttons, detectors and covers might be required.

© Entrematic Group AB – 2018

Entrematic offers a comprehensive range of products for industrial, commercial, institutional and residential applications, including sectional doors, loading dock equipment, high-performance doors, residential garage doors, pedestrian doors, gates and barriers, and automation and operators. Built on nearly 200 years of accumulated expertise, Entrematic aims to be the most dynamic, innovative company in the entrance automation industry, and the best partner for dealers and installers. Our well-known brands include Normstahl, Dynaco, Ditec and EM.

Entrematic, Amarr, Kelly, Serco, Normstahl, Dynaco, Ditec and EM, as words and logotypes, are examples of trademarks owned by Entrematic Group AB or companies within the Entrematic Group.

The Dynaco products are protected by worldwide registered patents. As part of its policy of continuous product development, Entrematic Belgium nv reserves the right to change the characteristics of its products or components without prior notice.

Disclaimers:

For a correct use of our products, please refer to our manual.

Everything that is mentioned in this brochure is only valid under the terms of use in the user manual and on condition that the door was properly installed and maintained and has not undergone abuse nor neglect.

ENTREMATIc BELGIUM NV
 Waverstraat 21
 B-9310 Moorsel-Aalst (Belgium)
 Tel. +32 53 72 98 98
 Fax. +32 53 72 98 50
 info.dynaco.eu@entrematic.com
 www.dynacodoor.com

ENTREMATIc